

The background of the entire page is a photograph of a solar farm. In the foreground, rows of blue solar panels are visible, receding into the distance. The sky is a vibrant blue with scattered white clouds. A bright sun is visible in the upper right corner, creating a lens flare effect. Two vertical yellow bars are positioned on the left and right sides of the page, framing the central text.

MCHENRY COUNTY SOLAR PROJECT

Embrace the Golden Horizons

McHenry County Solar Project, LLC is proposing a 100 MW solar energy facility in McHenry County, bringing many positive impacts to the local economy and community.

A solar project provides a healthy, productive economic development opportunity for local land to harvest a stable cash crop – the sun.

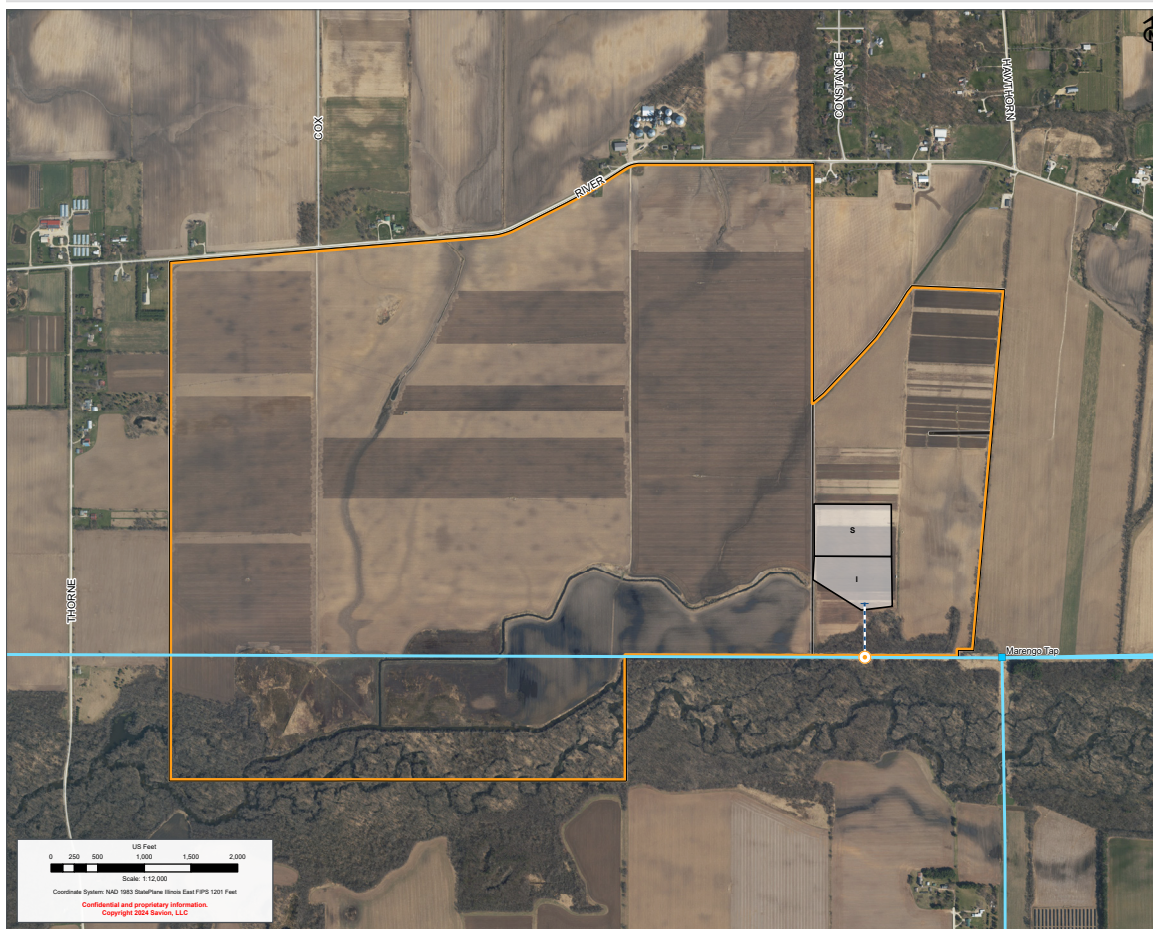
We are excited to be working in partnership with the McHenry County community on an opportunity to host a clean, environmentally compatible, renewable energy generation facility.

MCHENRY COUNTY SOLAR PROJECT

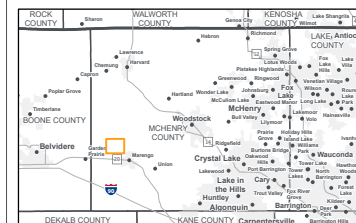
The Benefits of Going Solar in McHenry County:

- Impacts to the local economy through increased revenues to local governments and other services
- Boosts local business; creates new jobs during construction
- Requires minimal water consumption during construction and operations
- Will not increase local traffic during operations or create a burden on municipal services (i.e. sewer, water, emergency services, etc.)
- Clean, renewable energy has a beneficial impact on the environment
- Provides an abundant, earth-friendly, sustainable power resource to help stabilize electricity costs
- Offsets carbon emissions from fossil fuel power plants, and contributes to the diversification of the nation's electricity grid
- Quiet renewable energy generator without emissions

MCHENRY COUNTY SOLAR PROJECT



- Project Boundary
- Project Layout
- Project Gen-Tie
- Point of Interconnection (Solar)
- Project Facilities
- POI Switching Station
- Substation
- Existing Transmission Lines
- Voltage kV
- 138
- Substations



PRELIMINARY DESIGN – NOT FOR CONSTRUCTION

PROJECT MCHENRY COUNTY	
DEVELOPER SAVION, LLC	ENGINEER
DATE: 4/19/2024	SCALE: 1 INCH : 1,000 FEET
NOTES:	
SHEET 11X17 PROJECT (LLC)	

The following companies and organizations provided data that contributed to the production of this map - CoreLogic, Inc., Environmental Systems Research Institute (ESRI), ReGrid, Loveland Technologies, U.S. Department of Agriculture (USDA), U.S. Federal Aviation Administration (FAA), U.S. Geological Survey (USGS), WhiteStar Corporation, Verity, Inc., An ABB Company, Imagery © 2024 Hexagon and data partners.